

# 1200-E/ 1204-E Kemmerer Water Sampler

## Test before you sample!

We recommend that any new sampler be thoroughly cleaned prior to any sampling. In the event you are performing chemical sampling, before any sampling is done, first fill the sampler with distilled, contaminant-free water and test to determine what contaminants may be present in the sample.

We also recommend that the above procedure be repeated throughout the sampling season.

## Introduction:

Using the Wildco® Kemmerer Water sampler is simple: merely lower it on a suitable line to a desired depth. The 1200 series employs a patented trip of Wildco® design which automatically locks the stoppers open before lowering.

Despite its simplicity, it is best to **practice** with the Kemmerer before taking your sample.

In field work, attention to the key steps in the operation can help assure reliable and uniform samples.

### How to test your sampler before sampling:

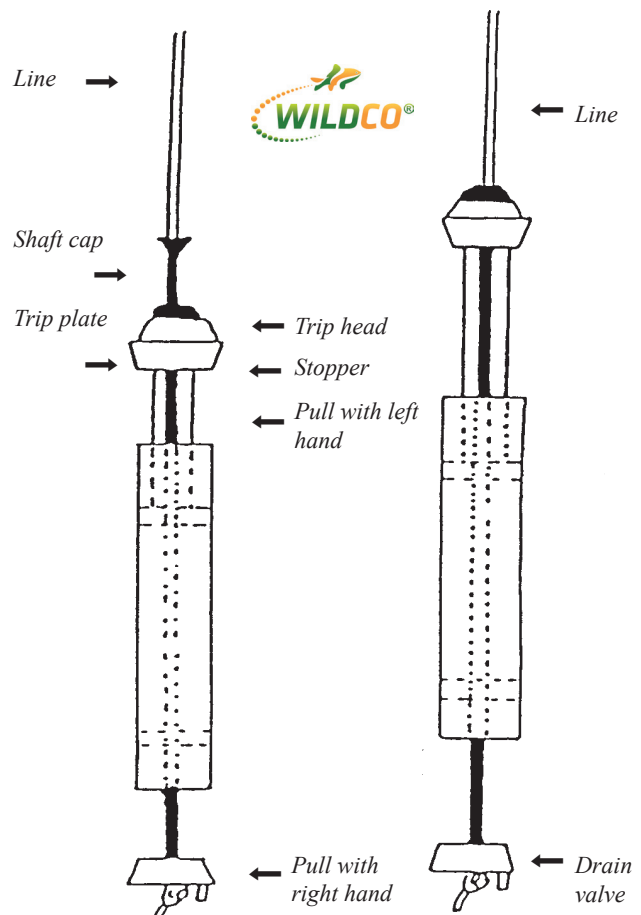
- Run a line (or light chain) through the central tube and fasten securely below the lower stopper to prevent the line from being pulled back through the hole. Depending on the type of line used, tie or pin the line at the bottom of the sampler. We suggest using a washer or nut.
- To cock the sampler, pull the trip head into the trip plate. This is done by holding top and bottom stoppers and giving a short, hard pull to the bottom stopper. [Note: Bottom stopper must make watertight seal with main tube. Drain tube gasket must also make watertight seal.]
- A messenger is attached to the line. When the sampler is at the desired depth, release the messenger. This falls down the line and closes both the upper and lower stoppers. The stoppers seal by their own weight, thus ensuring complete closure.

## Note about contamination:

Samplers with blue seals may leach phosphorus and mercury and are not recommended for chemical sampling.

## Safety:

To prevent personal injury, keep your hands clear of open ends of the main tube while the bottle is in the open position.



### P/N 005836

© Wildlife Supply Company. Wildco® and Wildlife Supply Company are registered trademarks of Morris & Lee Inc. All rights reserved. Revised 05-05

## Operation:

1. To set the sampler, pull the bottom stopper down until the shaft assembly snaps into the trip head.
2. If using a solid messenger, run a line through the messenger prior to attaching the line to the sampler. Attach the split messenger to the line once the sampler is at the desired depth.
3. We recommend using our 5 mm (3/16") braided polyester line, such as **62-C15** (see page 4). The line should be run through the shaft assembly and secured by knotting it at the bottom of the sampler with a washer.
4. Lower the bottle down to the desired depth. Release the messenger to close the sampler. The stoppers seal by their own weight, thus ensuring a complete closure.

**Important note:** The maximum height a messenger should be dropped through the air is 30 feet (10m). Distances greater than this can damage the bottle. Use a Wildco® shock absorber (**45-B40**) for long air drops.

**Do not use a messenger heavier than 11 oz!** Damage to your sampler may result.

## Maintenance:

- Do not store sampler or net when wet, damp or dirty.
- When returned from sampling, rinse thoroughly to remove any soil, debris, chemicals and oils.
- Allow both sampler and case to air dry thoroughly before placing in storage.
- Mold, mildew, metal corrosion and plastic surface deterioration may occur if instruments or nets are stored wet and/or dirty.
- The foam interior and the case may be damaged or deteriorate if the product is not dried after use.
- Kemmerer end seals (stoppers) should not be sealed, seated or fully closed during storage. While end seals are made of tough elastomers, they all have a tendency to take a set under long periods of inactivity and stress. Store the Kemmerer bottle with the end seals slightly open and with the end seals sealing area not touching the outer cylinder.
- Before storing any water bottle, the entire bottle should be rinsed in fresh, clean water and allowed to completely air dry. When fully dry, store in its case or in a **dark, cool, dry** shelf or cabinet.

## Accessories:

**Split messenger.** Our most popular messenger, this can be placed anywhere on your line, not just at the end, like our solid version. Of 316 corrosion-resistant stainless steel, it features a split barrel and tapered nose. Literally comes on and off with one hand, a great boon in sloppy weather. Includes an interior spring mechanism to hold the barrel closed and a built-in hole for attaching a safety lanyard. [Safety lanyards are used for series sampling, which requires a special water bottle.] Fits 3 to 6 mm (1/8 to 1/4") line, works best with 3/16" line (below). 227 or 312 grams in weight (8 or 11 ounces)

**45-B10** Split messenger, 11 oz. (312 g)

**45-B20** Split messenger, 8 oz (227 g)

**Braided nylon line.** 3/16" in diameter. Tight, solid braid for extra firmness, strength and minimum stretch. No filler in center to distort. Will not kink or untwist. Easy on hands; can be marked and spliced. Solid in 100 ft, 200 ft, and 100 meter lengths. Working load 110 pounds maximum - breaks at approximately 750 lbs.

**62-C15** 100 foot length

**62-C20** 200 foot length

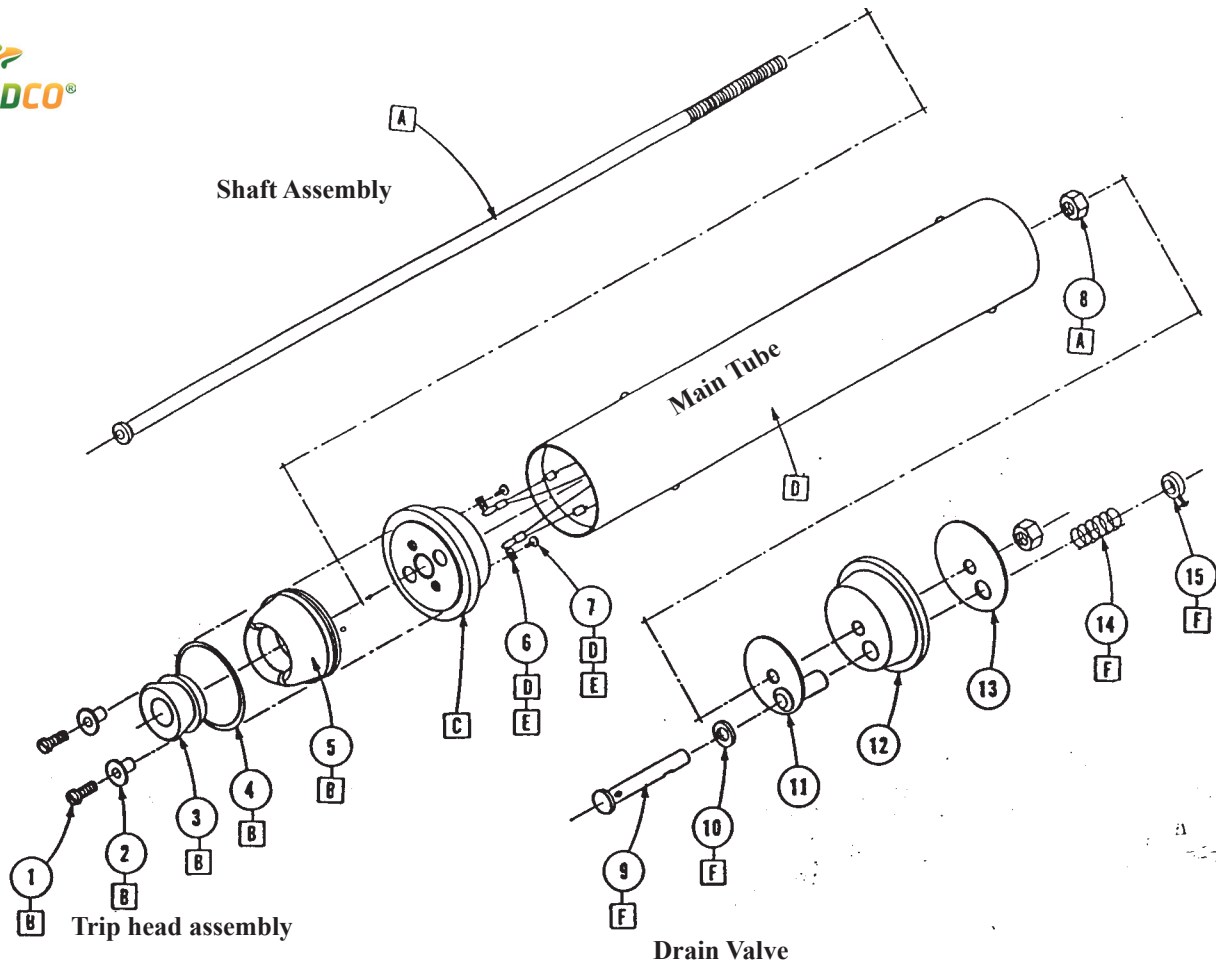
**62-C50** 100 meter length

**Messenger shock absorber.** Here is permanent protection for the trip head on long air drops. This custom-molded polyurethane "pillow" slips onto your line before your messenger. When the messenger falls, it hits the shock absorber first, protecting the trip from possible damage.

**45-B40** Polyurethane messenger shock absorber

## Warranty and Parts:

We replace all missing or defective parts free of charge. All products guaranteed free from defect in materials or workmanship for 90 days after date of shipment. This guarantee does not include accident, misuse, or normal wear and tear and applies to original purchaser only.



Kemmerer Part Descriptions	1200-E (1/2 L)	1204-E (0.4 L)
A. Shaft Assembly	1200-L33	1204-L33
B. Trip head assembly (1-5) polyurethane	1270-L10	1270-L10
B. Trip head assembly (1-5) SS	1270-L14	1270-L14
C. Top Stopper assembly PU	1200-L11	1200-L11
C. Top Stopper, silicone	1200-L21	
D. Main tube assembly, SS	1200-L32	
E. Cable assembly (6, 7)	1200-L15	
F. Drain valve (9, 10, 14, 15)	1270-L12	
Assorted fasteners (1, 2, 8)	1200-L99	
4. Garter springs, 3 per pack, for PU	1270-L82	
11. Small bottom washer/drain sleeve	1200-L13	
12. Bottom Stopper PU	1200-L17	
12. Bottom stopper, silicone	1200-L23	
13. Large bottom washer	1200-L19	

**Specifications:**

- Tube OD: 3.88"
- Tube length: 23.12"
- Length with stoppers set: 35.22"
- Takes plastic carry case: **910-G34**
- Stainless steel cylinder and interior
- Blue polyurethane end seals
- 3/16" line used for trip (**62-C15**)
- Takes **45-B10** 11 oz. messenger