

1220-E/1230-E Kemmerer Water Sampler

Test before you sample!

We recommend that any new sampler be thoroughly cleaned prior to any sampling. In the event you are performing chemical sampling, before any sampling is done, first fill the sampler with distilled, contaminant-free water and test to determine what contaminants may be present in the sample.

We also recommend that the above procedure be repeated throughout the sampling season.

Introduction:

Using the Wildco® Kemmerer Water sampler is simple: merely lower it on a suitable line to a desired depth. The 1200 series employs a patented trip of Wildco® design which automatically locks the stoppers open before lowering.

Despite its simplicity, it is best to **practice** with the Kemmerer before taking your sample.

In field work, attention to the key steps in the operation can help assure reliable and uniform samples.

How to test your sampler before sampling:

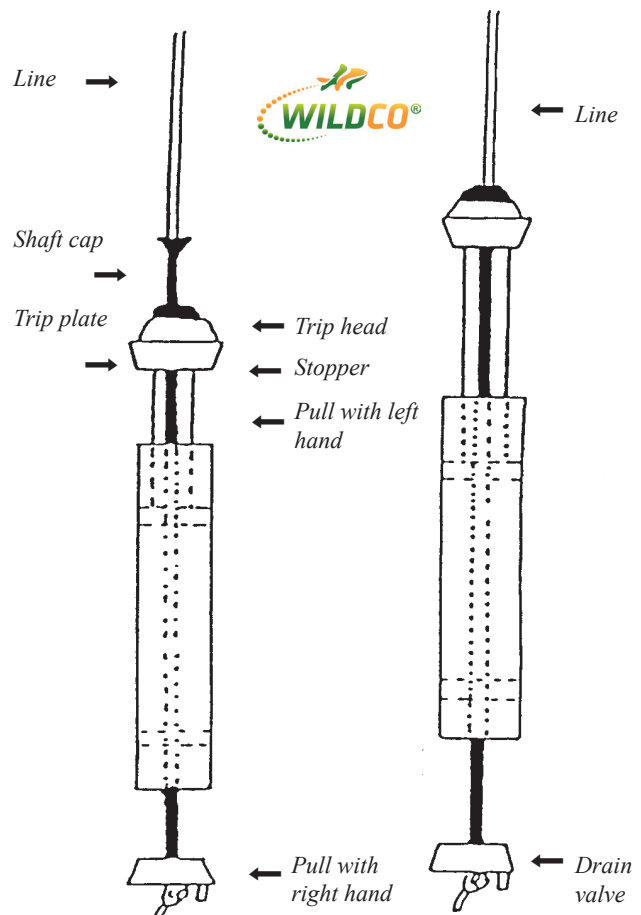
- Run a line (or light chain) through the central tube and fasten securely below the lower stopper to prevent the line from being pulled back through the hole. Depending on the type of line used, tie or pin the line at the bottom of the sampler. We suggest using a washer or nut.
- To cock the sampler, pull the trip head into the trip plate. This is done by holding top and bottom stoppers and giving a short, hard pull to the bottom stopper. [Note: Bottom stopper must make watertight seal with main tube. Drain tube gasket must also make watertight seal.]
- A messenger is attached to the line. When the sampler is at the desired depth, release the messenger. This falls down the line and closes both the upper and lower stoppers. The stoppers seal by their own weight, thus ensuring complete closure.

Note about contamination:

Samplers with blue seals may leach phosphorus and mercury and are not recommended for chemical sampling.

Safety:

To prevent personal injury, keep your hands clear of open ends of the main tube while the bottle is in the open position.



P/N 005831

© Wildlife Supply Company. Wildco® and Wildlife Supply Company are registered trademarks of Morris & Lee Inc. All rights reserved.

Operation:

1. To set the sampler, pull the bottom stopper down until the shaft assembly snaps into the trip head.
2. If using a solid messenger, run a line through the messenger prior to attaching the line to the sampler. Attach the split messenger to the line once the sampler is at the desired depth.
3. We recommend using our 5 mm (3/16") braided polyester line, such as **62-C15** (see page 4). The line should be run through the shaft assembly and secured by knotting it at the bottom of the sampler with a washer.
4. Lower the bottle down to the desired depth. Release the messenger to close the sampler. The stoppers seal by their own weight, thus ensuring a complete closure.

Important note: The maximum height a messenger should be dropped through the air is 30 feet (10m). Distances greater than this can damage the bottle. Use a Wildco® shock absorber (**45-B40**) for long air drops.

Do not use a messenger heavier than 11 oz!
Damage to your sampler may result.

Maintenance:

- Do not store sampler or net when wet, damp or dirty.
- When returned from sampling, rinse thoroughly to remove any soil, debris, chemicals and oils.
- Allow both sampler and case to air dry thoroughly before placing in storage.
- Mold, mildew, metal corrosion and plastic surface deterioration may occur if instruments or nets are stored wet and/or dirty.
- The foam interior and the case may be damaged or deteriorate if the product is not dried after use.
- Kemmerer end seals (stoppers) should not be sealed, seated or fully closed during storage. While end seals are made of tough elastomers, they all have a tendency to take a set under long periods of inactivity and stress. Store the Kemmerer bottle with the end seals slightly open and with the end seals sealing area not touching the outer cylinder.
- Before storing any water bottle, the entire bottle should be rinsed in fresh, clean water and allowed to completely air dry. When fully dry, store in its case or in a **dark, cool, dry** shelf or cabinet.

Accessories:

Split messenger. Our most popular messenger, this can be placed anywhere on your line, not just at the end, like our solid version. Of 316 corrosion-resistant stainless steel, it features a split barrel and tapered nose. Literally comes on and off with one hand, a great boon in sloppy weather. Includes an interior spring mechanism to hold the barrel closed and a built-in hole for attaching a safety lanyard. [Safety lanyards are used for series sampling, which requires a special water bottle.] Fits 3 to 6 mm (1/8 to 1/4") line, works best with 3/16" line (below). 227 or 312 grams in weight (8 or 11 ounces)

45-B10 Split messenger, 11 oz. (312 g)

45-B20 Split messenger, 8 oz (227 g)

Braided nylon line. 3/16" in diameter. Tight, solid braid for extra firmness, strength and minimum stretch. No filler in center to distort. Will not kink or untwist. Easy on hands; can be marked and spliced. Solid in 100 ft, 200 ft, and 100 meter lengths. Working load 110 pounds maximum - breaks at approximately 750 lbs.

62-C15 100 foot length

62-C20 200 foot length

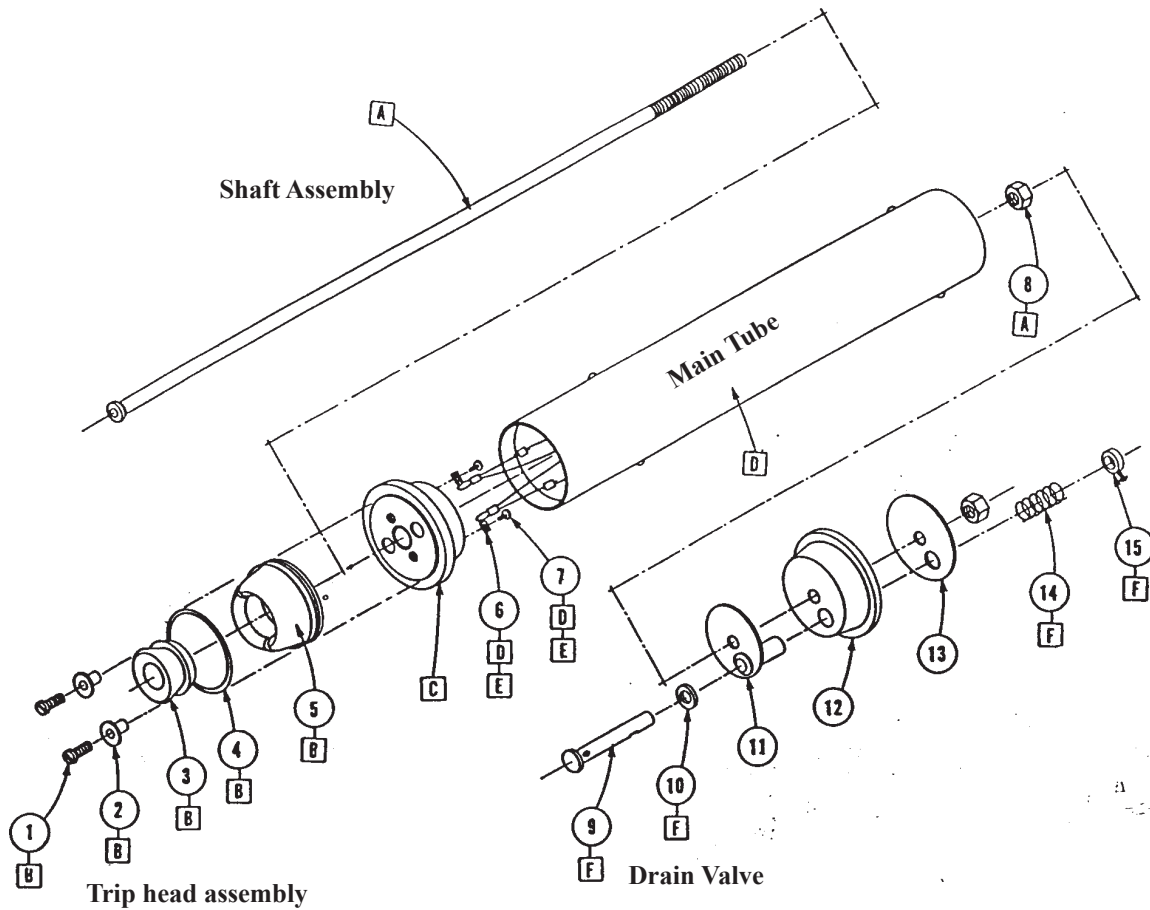
62-C50 100 meter length

Messenger shock absorber. Here is permanent protection for the trip head on long air drops. This custom-molded polyurethane "pillow" slips onto your line before your messenger. When the messenger falls, it hits the shock absorber first, protecting the trip from possible damage.

45-B40 Polyurethane messenger shock absorber

Warranty and Parts:

We replace all missing or defective parts free of charge. All products guaranteed free from defect in materials or workmanship for 90 days after date of shipment. This guarantee does not include accident, misuse, or normal wear and tear and applies to original purchaser only.



Kemmerers Part Descriptions

A.	Shaft Assembly	1200-L33	1230-L33
B.	Trip head assembly (1-5) PU	1270-L10	1270-L10
B.	Trip head assembly (1-5) SS	1270-L14	1270-L14
C.	Top Stopper assembly polyurethane	1220-L11	1220-L11
C.	Top Stopper, silicone	1220-L21	1220-L21
D.	Main tube assembly, SS	1220-L32	1230-L32
E.	Cable assembly (6, 7)	1220-L15	1220-L15
F.	Drain valve (9, 10, 14, 15) delrin	1270-L12	1270-L12
F.	Drain valve (9, 10, 13, 15) stainless steel	1270-L13	1270-L13
	Assorted fasteners (1, 2, 8)	1200-L99	1200-L99
4.	Garter springs, 3 per pack, for PU	1270-L82	1270-L82
11.	Small bottom washer/drain sleeve	1200-L13	1200-L13
12.	Bottom Stopper PU	1220-L17	1220-L17
12.	Bottom stopper, silicone	1220-L23	1220-L23
13.	Large bottom washer	1200-L19	1200-L19

1220-E (2.2 L)

1230-E (3.2 L)

Specifications:

- Tube OD: 3.5"
- Tube length, 2.2 L: 16.25"
- Tube length, 3.2 L: 23.12"
- 2.2 L takes plastic case: **910-G34**
- 3.2 L takes wood case: **910-A25**
- Stainless steel cylinder and interior
- Blue polyurethane end seal
- 3/16" line used for trip (**62-C15**)
- Takes **45-B10** 11 oz. messenger